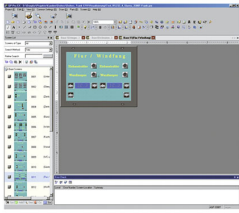


**DATA SHEET**  
**DDS 1 DDE-Server**  
 Article number 37501149



[Internetlink](#)



symbolic image

**Function**

Optional devices apply as accessories to the main product classes. This software enables data of a Dupline system to be incorporated in applications which master the Microsoft DDE protocol or which can handle ActiveX components (e.g. Microsoft Office programmes such as Word, Excel or Access). Operating the DDE interface is incredibly easy: the channels to be displayed are simply taken from the server face into the relevant application where they are immediately available. The Dupline channels are simply controlled via Visual Basic programming which is by now supported by all Office programmes. The interface created with the DDE server enables further processing of Dupline data in a very simple way: whether digital or analog data are to be written into a log file or counter readings have to be processed for raising invoices – these functions can be carried out without problems.

**Features**

software for displaying Dupline addresses in Office programs (such as Excel), DDE server and ActiveX technology, communication with up to 32 DKG 20/DKG 21-GSM, compatible with lots of 32-bit Windows operating systems

**Applications**

The use of the DDE/ActiveX server is recommended if in-depth access to Dupline system data is required. Typical applications are exporting counter values (consumption values) in leisure facilities and load management in industrial facilities.

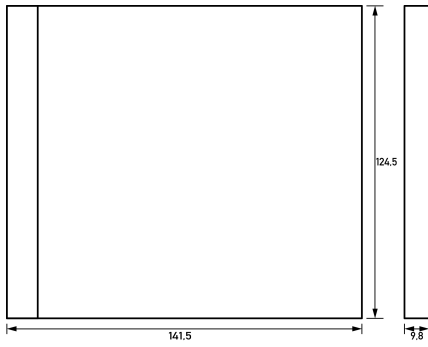
**Notes**

A demo version of the software can be found on our homepage at <http://www.doepke.de>.

**Technical Data**

Technical Data	DDS 1 DDE-Server
Series	DDS 1 DDE server
Operating system	Windows 2000 (SP3), Windows XP, Windows 7, Windows 2003
Languages	English
General data description	General data
Width	141.5 mm
Height	124.5 mm
Depth	9.8 mm

## Dimensions



Dimensional drawing Group view